

XBLUE Networks 802.11n WiFi Adapter



Revision Date	Version	Supersedes	Description
January 2012	Version 1.0		Initial Release
May 2012	Version 1.0 Issue 2	Version 1.0	Revised programming steps
July 2012	Version 1.0 Issue 3	Version 1.0 Issue 2	Revised Programming steps

© Copyright 2011 by XBLUE Networks, LLC All rights reserved

Documentation Disclosure

The information contained in this document is subject to change without notice and should not be construed as a commitment by XBLUE Networks, LLC. The information contained herein is supplied without representation or warranty of any kind. XBLUE Networks, reserves the right, without notice, to make changes to the equipment, equipment design and documentation as advances in engineering and manufacturing methods warrant; and assumes no responsibility and shall have no liability of any kind arising from the supply or use of this document or the material contained herein.

Warning: This documented information is designed to assist in the installation of the new XBLUE products. XBLUE networks has done its best to give adequate warnings and cautions to advise both technical and non-technical individuals, but it is very important to use common sense when installing all electrical equipment.

- The use of this system may result in local, long distance, Internet access or data transfer charges, which are the sole responsibility of the user/owner of the equipment.
- Wireless access has been added for convenience, however, XBLUE does not warrant or guarantee, written or implied, that the wireless will work in every location. It is the responsibility of the owner to enable security to stop unwanted access to the network.

Copyright and Trademark Notice

All right reserved. No part of this publication may be reproduced, transmitted, transcribed, stored in retrieval system, photographically or translated into any language or computer language, in any form or by any means, electronic, mechanical, magnetic, optical, chemical, manual or otherwise, without the prior written permission of XBLUE Networks, LLC.

Windows 98/NT/2000/XP/Windows7™ and Internet Explorer™ are registered trademarks of Microsoft Corporation. All other company, brand and product names, like Netscape Navigator™, Google Chrome™ are trademarks or registered trademarks of their respective owners.

Regulatory Information

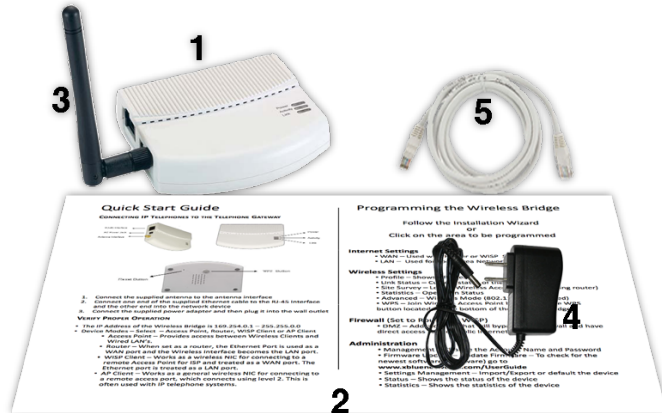
This equipment has been tested and found to comply with the limits of a Class B digital device, pursuant to Part 15 of the FCC Rules. These limits are designed to provide reasonable protection against harmful interference in a residential (and business) setting. This product generates, uses and can radiate radio frequency energy and, if not installed and used as directed, it may cause harm interference to radio communications. However, there is no guarantee that interference will not occur in a particular installation.

This device has been tested and found to comply with the following European Union directives: EN300 328, EN301 489-1, EN301 489-17, EN50385, EN60950-1 and UL approved in the United States.

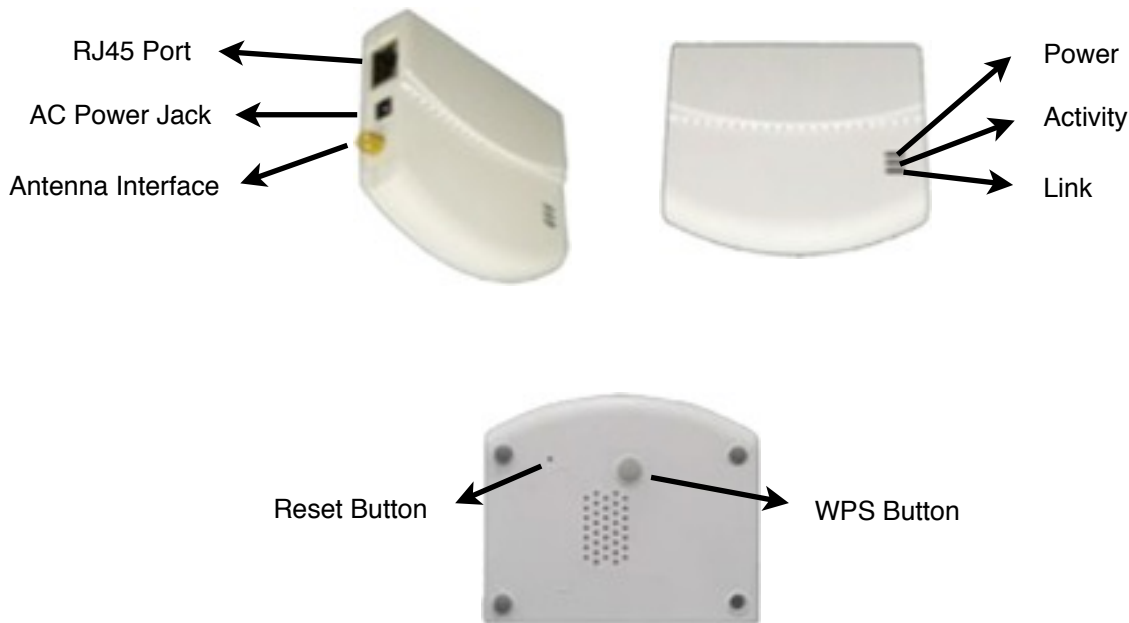


Contents of Box

1. 47-9005 XBLUE Networks WiFi Adapter
2. Quick Start Guide
3. 2dBi Detachable RSMA Antenna
4. Power Adapter
5. RJ45 Ethernet Cable



Getting to Know your WiFi Adapter



Reset (Pinhole) Button - Restore To Default

This is only used to restore the unit back to factory default. With the WiFi Adapter powered up, use a device such as a paperclip to press and hold the recessed "Reset Button" until all of the lights go out. This will take about 8 to 10 seconds. When the unit powers up, it will be at factory default.



Connecting the WiFi Wireless Adapter

XBLUE Networks has developed a special WiFi Wireless Adapter that allows you to put your **X-2020** and **X-44** VoIP Telephones in a location that does not have access to an Ethernet Cable. The WiFi Wireless Adapter requires an “802.11n” wireless router. If you are using an **XBLUE X-50** system with a software version of 9.6 or newer the WiFi Adapter will automatically connect, there is no programming required.

Default Programming

At default the WiFi Adapter will automatically connect to the **XBLUE X-50** system using the following parameters:

- Mode = AP Client
- SSID = Voice - Hidden
- Security = WPA2-PSK
- Encryption = AES
- WPA Shared Key - eciovrofdiss (ssid for voice - backwards)

Other Default Settings

Operation Mode	AP Client
User	admin
Password	admin
IP Address	169.254.0.1
Router Mode IP Address	172.32.1.254
Subnet Mask	255.255.0.0
SSID	Voice
Channel	Auto
Mode	11b/g/n mixed mode
Encryption	WPA2-PSK, AES
Passphrase	eciovrofdiss
WPS Function	Disabled
DHCP Server	Disabled

Setting up your WiFi Adapter

1. Remove all of the contents from the box
2. Connect the Antenna to the WiFi Adapter
3. Plug the provided Ethernet cable into your computer and the WiFi Adapter.
4. Plug the power cord into into the WiFi Adapter and then plug it into your AC powered wall outlet and allow it to boot up. It is normal for the Power LED on the WiFi adapter to take up to 6 seconds to illuminate.

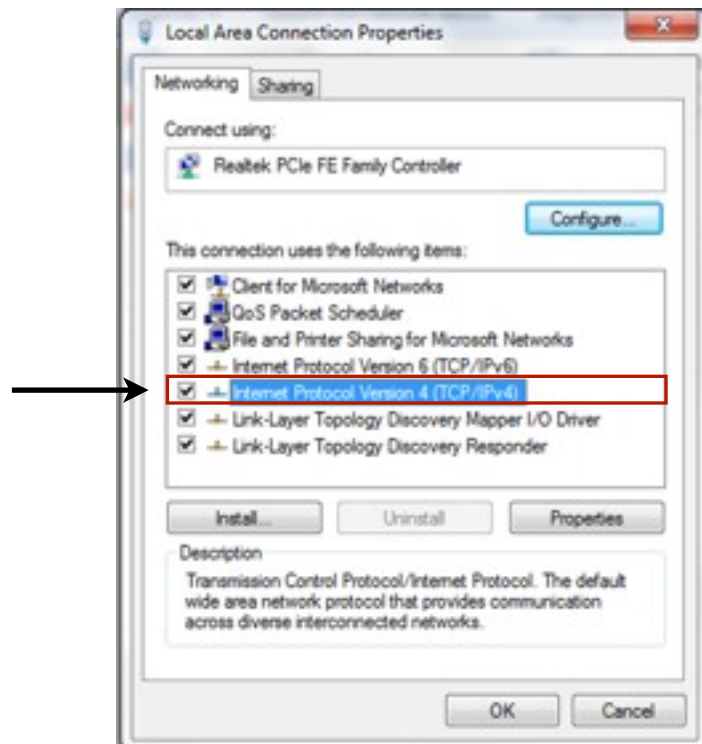
LED Name	LED Color	Light Status	Description
Power	Amber	On	The device is on and ready.
		Off	The device is off.
Activity	Blue	On	The device is on and ready.
		Off	The device is off.
		Flashing	The device is transmitting or receiving data.
Link	Red	On	The device is connected to an Ethernet network.
		Off	The device is off or there is no Ethernet connection.
		Flashing	The Device is connected to an active network

Getting Started

With your PC powered up, make sure to disconnect any connections (wired or wireless) to your Local Area Network (Internet). Be sure to power up the WiFi Adapter and connect it to your Personal Computer.

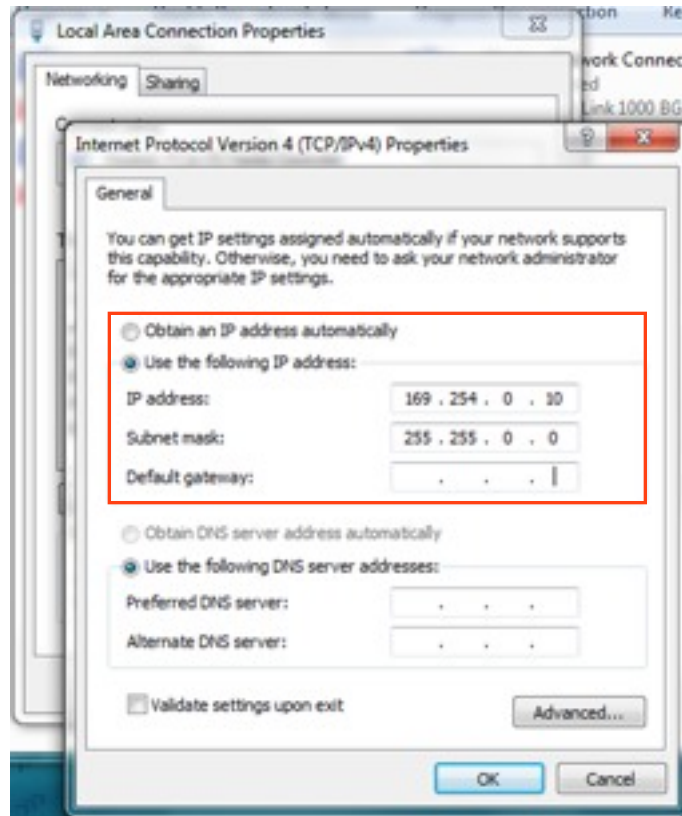
From your Personal Computer

1. From your desktop right click on the “Network” ICON and locate and click on Properties or go to Control Panel, locate and double click on (Windows 7) Network and Sharing Center (Windows XP) Network Connection and double click. Windows 7 requires an extra step - locate and double click on “Change Adapter Settings” which can be found on the left side of your display.
2. Locate and right click on the “Local Area Connection” for your wired (because the WiFi Adapter is connected to your computer using a cable) Internet connection and locate and click on properties. Generally, a wireless adapter will say “Wireless” or “WiFi”.
3. Locate and double click on (Windows 7) “Internet Protocol Version 4 (TCP/IPv4)” (Windows XP) Internet Protocol (TCP/IP).



4. Select “Using the Following IP Address”

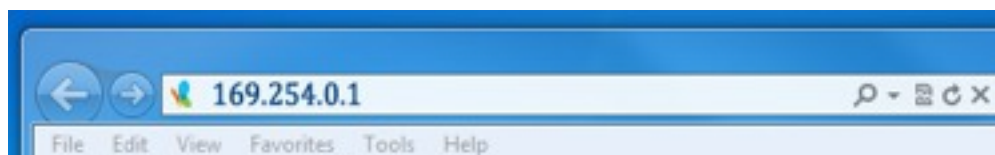
5. Enter – 169.254.0.10 and then press “Tab” – this will automatically enter 255.255.0.0 into the “Subnet Mask” field.



6. Click on “OK” to exit the Version 4 (TCP/IPv4) page
7. Click on “Close” to exit the Local Area Connection Properties page

Note: This procedure forces your PC to use the same network settings as the WiFi Wireless Adapter, which is located at 169.254.0.1.

Open Windows Internet Explorer 7, or newer, and enter the IP Address of the WiFi Wireless Adapter, which is 169.254.0.1 and then press enter



Log into the WiFi Adapter using "admin" as the user name and "admin" as the password and then click OK



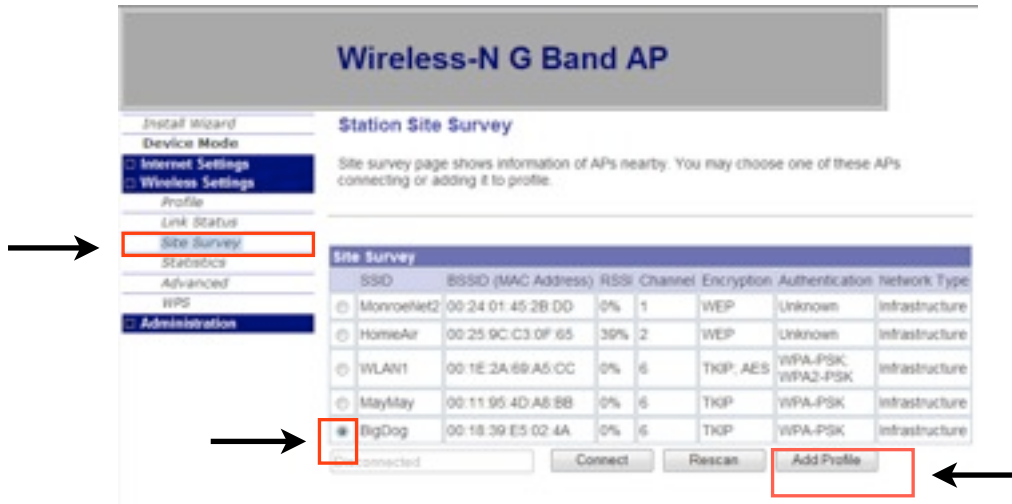
1. Click on Wireless Settings



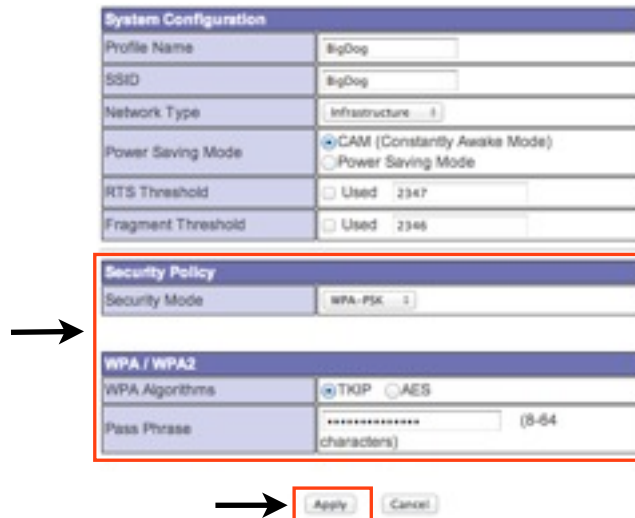
2. Click on "Site Survey"



3. Locate your wireless router and click on it, filling in the radio button



4. Then click on the Add Profile Button
5. Enter a name for the profile that you are creating, such as "BigDog" and then Confirm the Security Policy, WPA/WPA2, WPA Algorithms, and enter the router password and then click on Apply



6. Click on the Profile Tab and then locate the profile that you just created and then click on "Activate". Activation will take between 20 and 60 seconds and a green check will appear once the profile is active.

Wireless-N G Band AP

Install Wizard

Device Mode

- Internet Settings
- Wireless Settings**
- Profile*
- Link Status*
- Site Survey*
- Statistics*
- Advanced*
- WPS*
- Administration

Station Profile

This page shows profiles list which AP client would connect to. You can manage each profile contents by following function buttons.

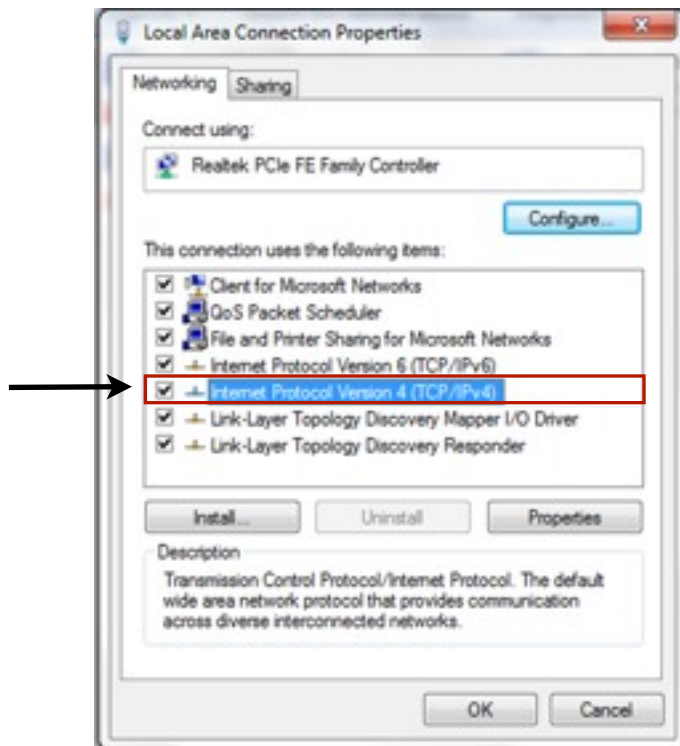
Profile List

	Profile	SSID	Channel	Authentication	Encryption	Network Type
<input type="radio"/>	Wifi Bridge	Voice	Auto	WPA2-PSK	AES	Infrastructure
<input checked="" type="radio"/>	BigDog	BigDog	Auto	WPA2-PSK	TKIP	Infrastructure

7. To verify that the WiFi Adapters is connected, click on Link Status and you will see the network information being transferred back and forth.
8. The next step is to reset your computer to use DHCP so that it automatically connects to your existing network

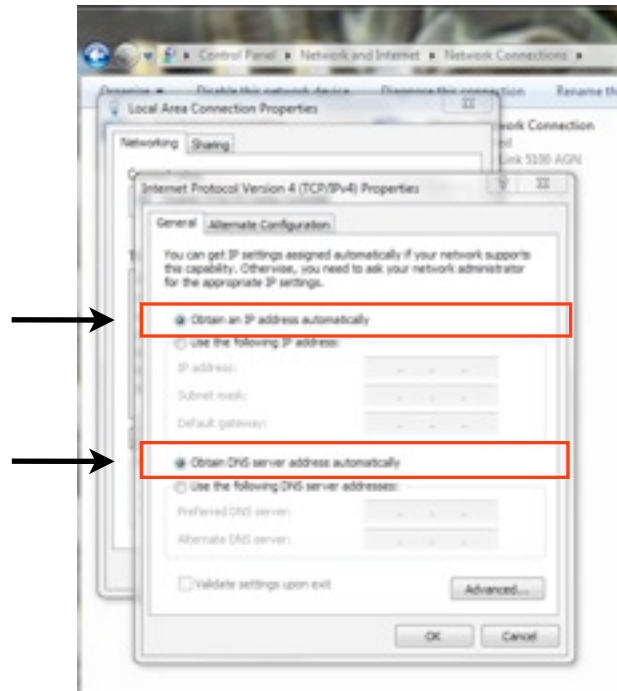
Reconfiguring your Computer's Network Connection

1. From your desktop right click on the "Network" ICON and locate and click on Properties or go to Control Panel, locate and double click on (Windows 7) Network and Sharing Center (Windows XP) Network Connection and double click. Windows 7 requires an extra step - locate and double click on "Change Adapter Settings" which can be found on the left side of your display.
2. Locate and right click on the "Local Area Connection" for your wired (because the WiFi Adapter is connected to your computer using a cable) Internet connection and locate and click on properties. Generally, a wireless adapter will say "Wireless" or "WiFi".
3. Locate and double click on (Windows 7) "Internet Protocol Version 4 (TCP/IPv4)" (Windows XP) Internet Protocol (TCP/IP).



4. Select Obtain an IP Address automatically (Windows XP) Using Network and sharing

5. Select obtain DNS Server address automatically.



6. Click on "OK" to exit the Version 4 (TCP/IPv4) page
7. Click on "OK" to exit the Local Area Connection Properties page Select "Obtain an IP Address Automatically"
8. Close the network and sharing page
9. To verify that the WiFi Adapter programming was successfully, you should be able to open your Internet Browser and connect to the Internet.
 - a. If you cannot access the Internet, start by restoring the WiFi Adapter back to factory default (Page3) and redo the programming steps (pages 6 - 12).
 - b. If you can access the Internet, unplug the WiFi adapter and connect it to your Device.
10. Remember, since the first step to this process was to disable your access to the Internet, don't forget to re-enable your access.

Note:

The quality of your wireless connection may affect the quality of the voice connection. There is no guarantee, written or implied, that the XBLUE Wireless adapter will work 100 percent of the time.



Notes:



XB47-WiFi - WiFi Adapter Doc

© Copyright XBLUE Networks, LLC 2011